

Danse Macabre

(Theme Fragments)

Tempo de Spooky

Camille Saint-Saens
French - 1874
Original Key G minor

Intro

The Intro section consists of two staves of music in 3/4 time. The first staff begins with a treble clef and a 3/4 time signature. It contains four measures of music, primarily using dotted rhythms and chords. The second staff continues with four more measures, featuring eighth-note patterns and chords.

A Theme

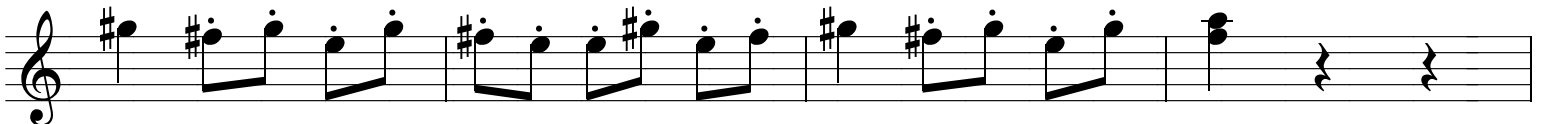
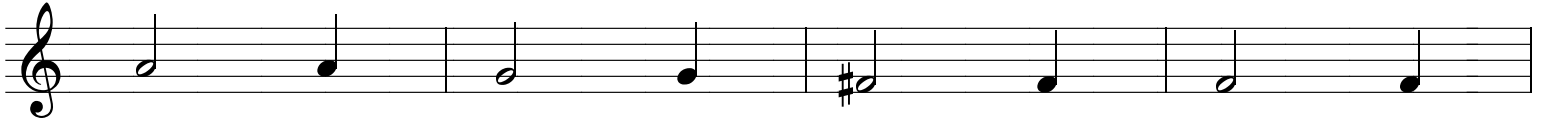
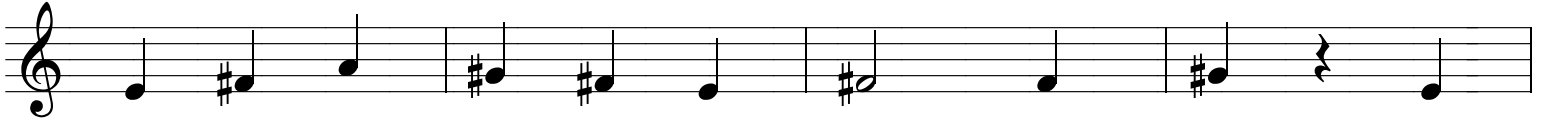
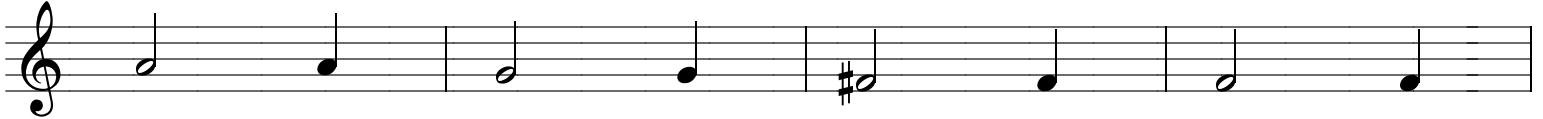
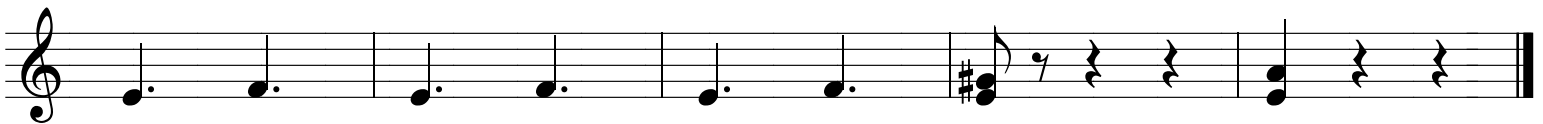
The A Theme section consists of two staves of music. The first staff begins with a repeat sign and contains four measures of eighth-note patterns. The second staff continues with four more measures, ending with a double bar line and repeat dots.

B Theme

The B Theme section consists of two staves of music. The first staff begins with a quarter rest followed by a quarter note, then four measures of eighth-note patterns. The second staff continues with four more measures, ending with a double bar line and repeat dots.

C Theme

The C Theme section consists of two staves of music. The first staff begins with a quarter rest followed by a quarter note, then four measures of eighth-note patterns. The second staff continues with four more measures, ending with a double bar line and repeat dots.

*D Theme**E - Finale*

Danse Macabre, in the original, is much longer than this fragmentary version. You can find several orchestral recordings on the internet. The original is in G minor.

I have adapted this set of fragments to be manageable for folk instruments. I have marked sections as "A Theme", "B Theme", etc. Feel free to repeat themes and phrases as you will, don't repeat themes or phrases, or drop out themes or phrases. Improvise if you wish.